

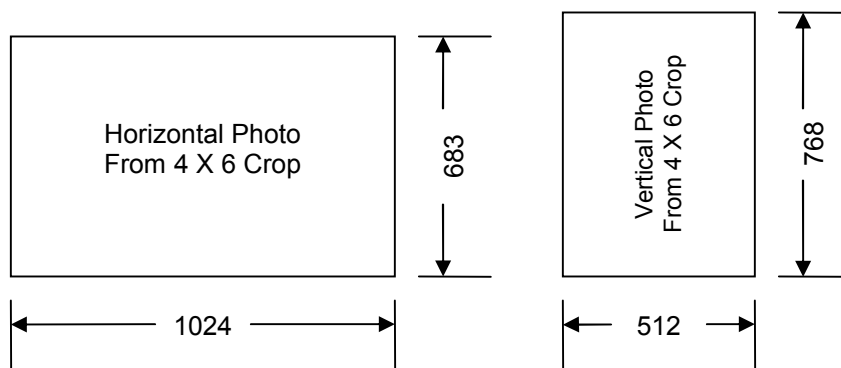
Preparing Photos for the EMCC Competitions

PRINTS

1. All prints must be mounted and/or matted. No frames! The **name** of the photographer must appear on the **top of the back** of the print. An ID number for each print will be given to the photographer prior to the competition and must be written in the **upper left corner** on the **back** of the print. No writing should appear on the front of the print or mat.
2. The minimum size for prints (the photograph, not the mount) is 5X7 inches. The maximum size is 16 X 20 inches including the mat, if any. Panoramic images must also conform to the maximum long dimension of 20 inches.

DIGITAL PROJECTION

1. Size must be set to a maximum width of 1024 pixels **and/or** a maximum height of 768 pixels. This may vary, depending on how it is cropped, as long as you don't exceed the maximums. See the following illustration for examples:

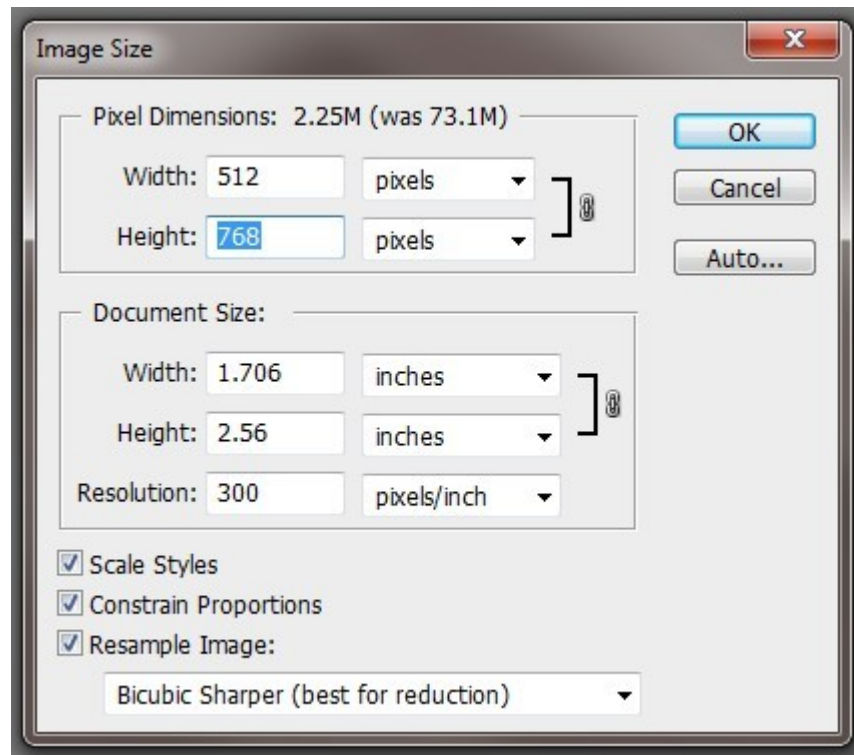


2. Following is a step by step procedure to resize an image for digital projection in Photoshop (See example screen shots on following pages):
 - 2.1. In the Image menu, select Image Size...
 - 2.2. DPI doesn't matter at all, unless you are making a print, so just ignore it for digital projection.
 - 2.3. Leave the Constrain Proportions and Resample Image boxes checked (Scale Styles doesn't matter either in this case).
 - 2.4. If you have the choice, under Resample Image, choose "Bicubic Sharper" as the resample type, assuming you are reducing the file size. If bicubic sharper is not there, just select Bicubic.
 - 2.5. **For a vertical image**, in the "Pixel Dimensions" area, enter **768** for the **Height**. The width will automatically scale to the proper width (because you selected Constrain Proportions earlier).
 - 2.6. **For a horizontal image**, in the "Pixel Dimensions" area, enter **1024** for the **Width**--the height will scale automatically, but watch out that it doesn't go above 768. This can

happen if you've cropped the image to something less than a 4/3 ratio. If this happens, just go back and enter 768 for the height, and everything should be fine.

2.7. Click OK.

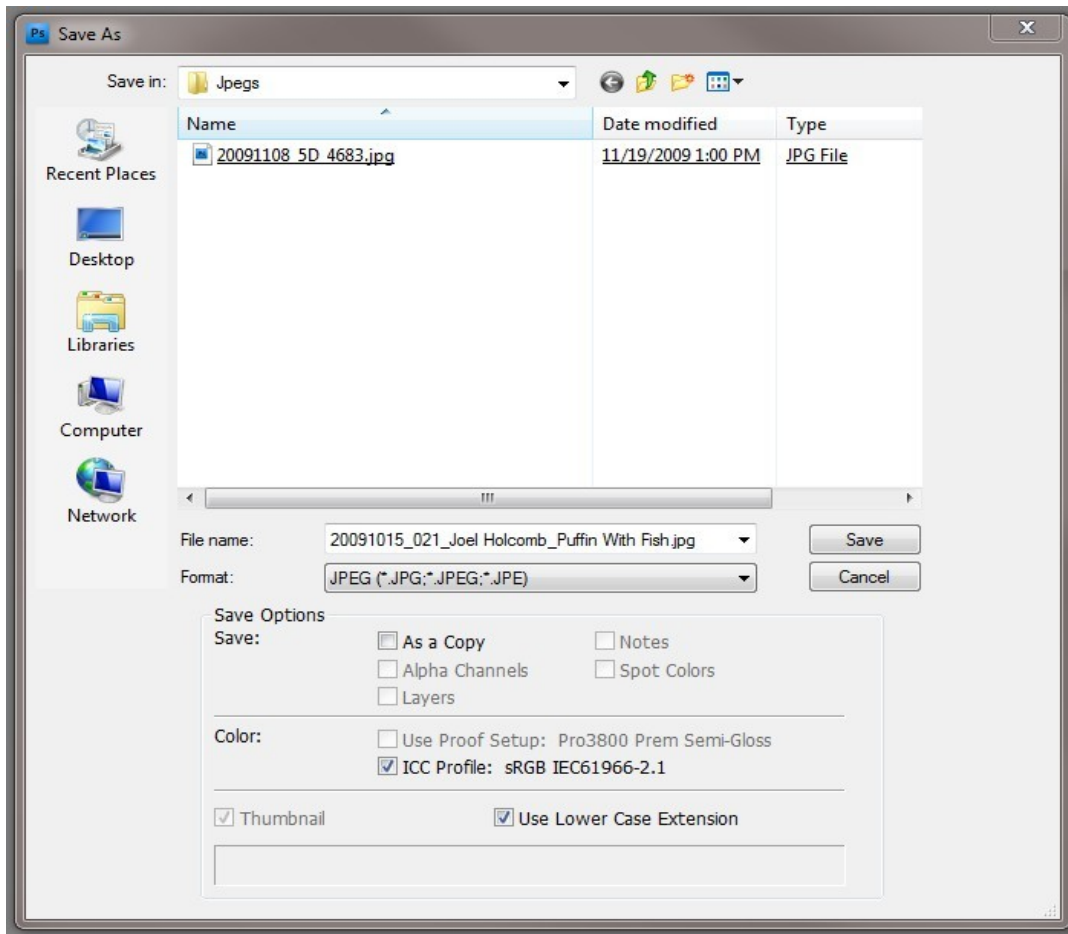
2.8. Here is an example of the dialog box for a vertical image:



3. All photos submitted must be in JPEG format (.jpg file extension). You should save them at a high quality level of 8 or 9. Jpeg quality is usually presented as an option when you save the file.
4. The file name must include the competition date (formatted as yyyyymmdd), sequence number, photographer's name, and a brief title, in that order; e.g. 20070920_032_Sally Arata_Moose Chasing Mary.jpg. To get the sequence number, you need to register your photo in the online competition entry form. There, you will receive a completely formatted file name for each image, which you can also copy and paste into the file name on your computer to make it quick and easy. See the examples below, and on the next page:
 - Highlight and copy the file name from the entry form on the EMCC website. (Tip: After highlighting, just press the [Ctrl] and C keys together to copy. (It's probably [Cmd] + C on a Mac.))

Name	Title	Entry
Joel Holcomb	Puffin With Fish	20091015_021_Joel Holcomb_Puffin With Fish
Joel Holcomb	Defensive Crab	20091015_022_Joel Holcomb_Defensive Crab

- Either paste the file name into the File name box in the “Save As” dialog box in Photoshop when saving your resized version, or while renaming the file in Windows Explorer. (Tip: Press the [Ctrl] and V keys together to paste. (It’s probably [Cmd] + V on a Mac.))



- Click “Save,” then select the Image Quality and click OK.

